

EU Type Examination Certificate

Date: 2020/07/08

n. **875202803/OE**

Validity:
2025/07/07

The hereunder described items of Personal Protective Equipment have overcome positively the "EU type examination" (Module B), proving their conformity to the safety and health requirements of the Regulation (EU) 2016/425 (Annex II)

Manufacturer: (Responsible of the PPE)	Red Wing Shoe Company, Inc. 314 Main Street, Red Wing, MN 55066 – USA	
Type of PPE:	Safety footwear in conformity with EN ISO 20345:2011 class I (= footwear in leather and other materials)	
Category of PPE:	II : "medium" risks. This certificate is based on reference standards listed below: its validity is no longer ensured should new version of the standards come into force.	
Model	"3257"	
Description:	<p><u>model</u>: A (low shoes); <u>fastening system</u>: by means of laces; <u>processing</u>: RIM (reaction injection mould); <u>outsole</u>: polverone 64144 and black 99666 PU MUNRO Classic Red Wing bicolor A3 declared ESD (61GH0002.230); <u>upper</u>: black and gray fabric matched with gray microfiber declared "PERSPAIR MT059 article LE 18216BT + MICR01703 Lyliane Microbase 13" (5TC34300.320) and insert in the heel area of black microfiber declared "Ecomonticello 058/13 SM sp.12/10 smerigliato con finish PU" (21ST3231.300); <u>tongue/bellows</u>: black 1081 textile declared "TECNIC L 1081 + CALIF. 5005 NERO IDRO ACC.RES" (21SX0544.PB4); <u>vamp lining</u>: Maleo gray 63569 non-woven fabric article TETRA declared mass per unit area 300 gr/mq (24TF0630.100); <u>quarter lining</u>: black knitting article AERPLUSS BS declared mass per unit area 210 gr/mq (24TT3710.300); <u>heel-grip</u>: black microfiber article MICROSUEDE 0,8 (21ST2930.300); <u>insole</u>: multi-layered fabric article Q-FLEX TX T6 MXC "R" CONDUTTIVO ESD red print (27ST0977.130) <u>which also serves as penetration resistant insert</u>; <u>removable insock</u>: thermoformed, red soft PU with Red Wing logo (27SP1370.500); <u>toecap</u>: made of glass fiber article F16 CONTENDER (37LA0056.330).</p>	
Technical Standard:	EN ISO 20344:2011 (UNI EN ISO 20344:2012)	Personal protective equipment – Test methods for footwear
	EN ISO 20345:2011 (UNI EN ISO 20345:2012)	Personal protective equipment – Safety footwear
Intended use:	general industry, engineering industry, agriculture, warehouses, works on trucks, cranes.	
Size range:	from 35 to 48	
Technical File:	DC-12124	
Test report:	RCT n°3912112/E	

EU Type Examination Certificate

Date: 2020/07/08

n. **875202803/OE**

Validity:
2025/07/07

Functions and performance levels:

basic requirements for safety footwear (SB) (see Table 2 and 3 of EN ISO 20345:2011): all mandatory ones, among which:

SRC = Slip resistance – meets the following requirement:

- surface: ceramic / lubricant: detergent solution;
- surface: steel / lubricant: glycerol.

Additional requirements (Tab. 18 and 20 of EN ISO 20345:2011):

S3 = closed seat region, antistatic properties, energy absorption of seat region, resistance to fuel oil, water penetration resistance and absorption (water-repellent upper), penetration resistance, cleated outsole.

Note 1: the penetration resistance of the synthetic stitch proof insole tends to decrease with the diameter of the perforating object; in return the synthetic insole offers more protective surface and ergonomics advantages (flexibility, insulation, humidity and impact absorption).

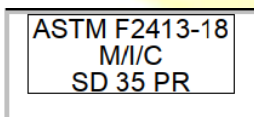
Note 2: the footwear also meets the requirement in accordance with IEC 61340-5-1:2016 (IEC 61340-4-3:2017) for the electrical resistance **ESD** (electric dissipative footwear).

Marking:

on a stitched label and displaying the following information:

- **CE Marking**;
- Name/Logo and complete address of the Manufacturer;
- designation of the footwear (article code: unique/unambiguous);
- nr. and year of the Standard of reference + safety symbols;
- size of the footwear (EU + USA + EUK);
- production date (month + year);
- additional information: internal codes, batch number.

Additional marking in accordance with the ASTM F2413-18 standard (not covered by this certification).



NOTE: the Technical File contains a more detailed description of the PPE (material, method of assembly, photographs or drawings), performance data, safety functions and level of protection, elements of conformity to the basic and supplementary requirements. The Technical File is integral part of the present Certification, which has to be kept available by the applicant to be forwarded - upon request - to the entitled person (supervising body, Controlling Officer).

