

EU Type Examination Certificate

Date: 2022/01/10

n. **875220201/OE**

Validity: 2026/12/21

The present Certificate cancels and replaces the previous one nr. 875215106/OE dated 2021/01/22.

The hereunder described items of Personal Protective Equipment have overcome positively the "EU type examination" (Module B), proving their conformity to the safety and health requirements of the Regulation (EU) 2016/425 (Annex II)

Manufacturer: (Responsible of the PPE)	Red Wing Shoe Company, Inc. 314 Main Street, Red Wing, MN 55066 – USA	
Type of PPE:	Safety footwear in conformity with EN ISO 20345:2011 class I (= footwear in leather and other materials)	
Category of PPE:	II : "medium" risks. This certificate is based on reference standards listed below: its validity is no longer ensured should new version of the standards come into force.	
Model	"3297"	
Description:	<p><u>model</u>: B (ankle boot); <u>fastening system</u>: by means of laces; <u>processing</u>: direct injection RIM (reaction injection mould); <u>outsole</u>: black PU "MUNRO TRAINER RED WING" marked made in Italy oil/slip resistant declared not antistatic (61GH0002.231); <u>midsole</u>: polverone 64144 foam PU; <u>upper</u>: black/grey fabric PERSPAIR MT070/M072 matched with microfiber (5TC34482.300), and insert in the heel area of black leather SCAMOSCIATO RETINATO HYDRO declared thickness 1,8-2,0 mm (13BS1026.300); <u>collar</u>: black fabric Cordura 1100 hydro + "feltro idro morbido" (24TT0220.300); <u>tongue/bellows</u>: black fabric TECNIC L 1081 + CALIF. 5005 IDRO color black (21SX0544.PB4), reinforced with the same leather of the upper, centrally lined and padded; <u>vamp lining</u>: Maleo gray 63569 non-woven fabric TETRA declared gr/mq 300 (24TF0630.100); <u>quarter lining</u>: black three-dimensional fabric AERPLUSS (code 24TT3710.300); <u>heel-grip</u>: black microfiber MICROSUEDE 0,8 (21ST2930.300) <u>insole</u>: multi-layered fabric, article Q-FLEX TX T6 "R" green print "ISOLANTE" (27ST0979.131), which also serves as penetration resistant insert; <u>removable insock</u>: thermoformed, article 1 451 432, red soft PU match with black fabric J-MICRO with Red Wing logo (27SP1277.350); <u>toecap</u>: made of glass fiber, article F16 CONTENDER (37LA0056.330).</p>	
Technical Standard:	EN ISO 20344:2011 (UNI EN ISO 20344:2012)	Personal protective equipment – Test methods for footwear
	EN ISO 20345:2011 (UNI EN ISO 20345:2012)	Personal protective equipment – Safety footwear
Intended use:	general industry, engineering industry, agriculture, warehouses, works on trucks, cranes.	
Size range:	from 35 to 48	
Technical File:	DC-13839	

EU Type Examination Certificate

Date: 2022/01/10

n. **875220201/OE**

Validity: 2026/12/21

Test report: **RCT n°4014205.01/E**

Functions and performance levels: **basic requirements for safety footwear (SB)** (see Table 2 and 3 of EN ISO 20345:2011): all mandatory ones, among which:

SRC = Slip resistance – meets the following requirement:
- surface: ceramic / lubricant: detergent solution;
- surface: steel / lubricant: glycerol.

Additional requirements (Tab. 18 and 20 of EN ISO 20345:2011):

E = energy absorption of seat region; **FO** = resistance to fuel oil of the outsole; **WRU** = resistance to water penetration and absorption; **P** = penetration resistance of the sole; **CR** = cut resistance.

Note: the penetration resistance of the synthetic stitch proof insole tends to decrease with the diameter of the perforating object; in return the synthetic insole offers more protective surface and ergonomics advantages (flexibility, insulation, humidity and impact absorption).

Marking: on a stitched label and displaying the following information:
- **CE Marking**;
- Name/Logo and complete address of the Manufacturer;
- designation of the footwear (article code: unique/unambiguous);
- nr. and year of the Standard of reference + safety symbols;
- size of the footwear (EU + USA + EUK);
- production date (month + year);
- additional information: internal codes, batch number.



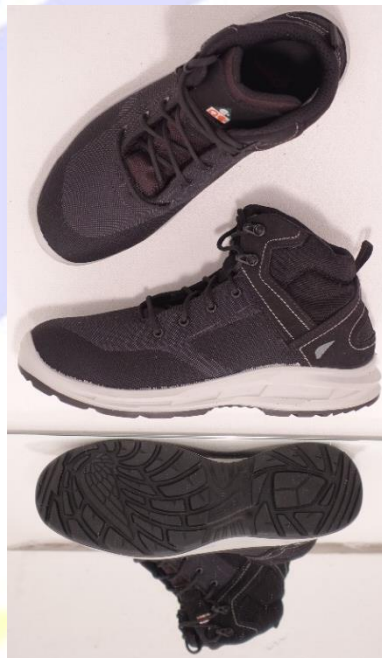
314 Main Street, Red Wing MN 55066 USA

EN ISO 20345:2011
SB E FO WRU P SRC CR

3297 

EU USA EUK CM
42 9 8 27

MT07055/AST-4798-12/2020



NOTE: the Technical File contains a more detailed description of the PPE (material, method of assembly, photographs or drawings), performance data, safety functions and level of protection, elements of conformity to the basic and supplementary requirements. The Technical File is integral part of the present Certification, which has to be kept available by the applicant to be forwarded - upon request - to the entitled person (supervising body, Controlling Officer).

